

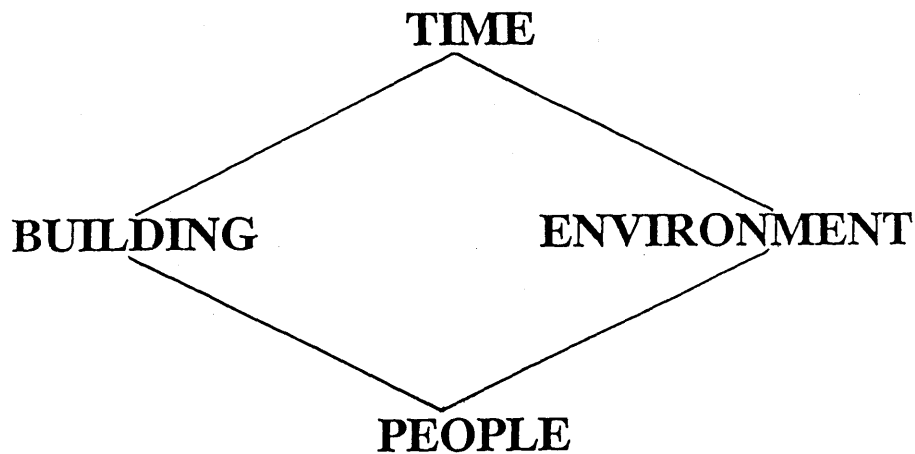


## **Classical Feng Shui**

**Kathy Zimmerman**

You have just found out that the dream house that you and your newly betrothed want to buy has been sold the last three times by couples who were divorcing. Would you still buy it? You are working on the great American novel but have been pacing in your office for a month, unable to write a word. Should you stick with it? If you know the principles of Feng Shui, the answer to both is yes!<sup>1</sup> Feng Shui gives you the tools to change the energy in those spaces to make them support the life and work that you most desire.

Four key ingredients: environment, people, timing, and building make up traditional Feng Shui. They are used when analyzing and making the appropriate recommendations, changes, suggestions, and cures to improve the energetics of a space:



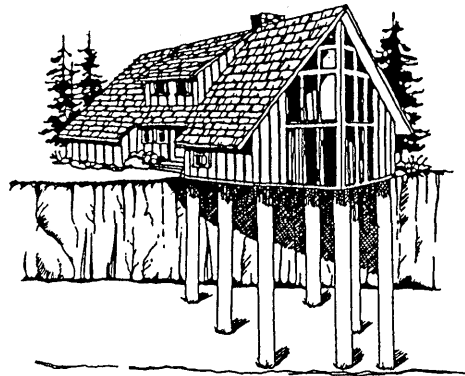
---

<sup>1</sup> Traditional or classical Feng Shui is considered a natural science, a form of Chinese geomancy (“geo” meaning earth, “mancy” meaning knowledge.) It is based on a complicated set of theories and calculations derived from the I Ching, the Chinese Book of Changes.

### The Environment

The surrounding environment plays a critical role in Feng Shui. Although you may have the ideal Feng Shui interior, it means little if you are living next to a toxic waste dump. The harmony of the internal environment cannot compensate for the detrimental effects of the external environment. By examining some environmental factors, you can better appreciate how influential they are.

#### Examples of environmental factors:



If a house is built on stilts, there is a strong likelihood that the occupants will experience a lack of foundation and a lack of money. Look at this condition as a metaphor. If a house is not solidly planted on the earth, it is not grounded and neither are the occupants.

If there is an overgrowth of trees blocking light from coming into the house, the people living there could experience lethargy and depression.<sup>2</sup> The solution is easy; trim the trees to let the light in.



---

<sup>2</sup> For example, the Scandinavian countries in winter, with scant hours of sunlight, have high rates of alcoholism, suicides, and depression.

If your home is on a busy street, the constant sound of traffic can cause anxiety. Planting trees or shrubbery as a buffer or installing double pane glass windows to help block the noise are options. Moving may be an even wiser one.



*Debbie bought a condo on a busy street in Los Angeles. The traffic was constant, twenty-four hours a day. Soon after moving in, she became very anxious and stressed. Finally, at the end of her rope, Debbie moved onto a very quiet street and within a month became calm, composed, and a dramatically different person.*

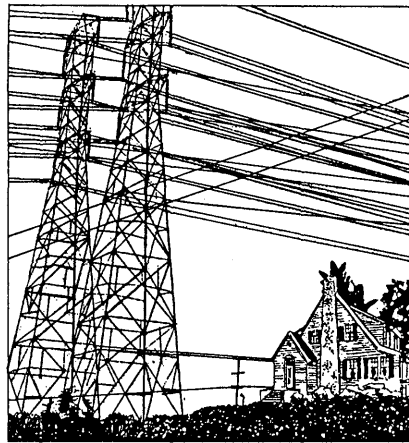
In a house where the back yard drops off into a hill or cliff, people in the house will have no *backing* and poor finances.



## 112 Contemporary Earth Design: A Feng Shui Anthology

---

Electric power lines and especially high tension wires are unhealthy. The Los Angeles Times reported,



“A number of scientific studies suggest electromagnetic fields (EMF’s),<sup>3</sup> which emanate from electrical currents that flow through power lines, and all electrical circuits might cause deadly diseases such as childhood leukemia, lymphoma, and brain cancer. Although the electric portion of those fields can be shielded, the magnetic fields penetrate concrete, soil, walls, and other solid objects without losing intensity.”

*A family had just purchased a condominium near some huge high tension wires. I told them simply to move. Like the the toxic waste dump example, you cannot put a price on health. If they were unable to move, I suggested they put a big rock between the wires and them. Rock (earth)<sup>4</sup> grounds the effects of the high tension wires.*

This case is a poignant reminder of **how important it is to use Feng Shui principles before you purchase your home.** Remember, “an ounce of prevention...”

---

<sup>3</sup> Please refer to “Energy Fields, Fragrance and Feng Shui,” p. 339, and “The Energetic Basis of Good Health,” p. 293.

<sup>4</sup> Please refer to “The Five Phases of Energy,” p. 81, and “Energy Fields, Feng Shui, and Fragrance,” p. 339.

## People

It is important to understand the people who are living in a particular space.

Each person is unique, with a distinct energy blueprint and resonance. Just as you have a relationship with other humans, you also have a relationship with your house or office.

One method for understanding your personal relationship to your home is using East/West teaching. It uses the eight principle directions, or eight types of magnetic fields and their corresponding trigram, to determine which directions are favorable for you and which are not. Your year of birth determines which trigram is yours, and consequently, it determines your corresponding compass direction.



The trigrams have many specific symbolic qualities and meanings. By knowing your personal trigram or *Feng Shui personality type*, you can determine many things, including your best sleeping direction along with your highest energy direction. Determine your trigram by consulting your birth year and the appropriate column: male/female. (If you were born between January 1 and February 3 of any year, see the note for the Chinese calendar conversion.<sup>5</sup>)

---

<sup>5</sup> The Chinese use a lunar calendar. Anyone born January 1 to February 3 is considered born the year before. A person born on January 2, 1965, would look at 1964 as the birth year. A person born on February 4 or “bridge day” must consult a Chinese calendar. Depending on the year, it may or may not coincide with the Western calendar year.

## Birth Year & Trigram Chart<sup>6</sup>

Year	Trigram		Year	Trigram	
	male	female		male	female
1900	K'an	Ken	1950	K'un	K'an
1901	Li	Chien	1951	Sun	K'un
1902	Ken	Tui	1952	Chen	Chen
1903	Tui	Ken	1953	K'un	Sun
1904	Chien	Li	1954	Kan	Ken
1905	K'un	Kan	1955	Li	Chien
1906	Sun	K'un	1956	Ken	Tui
1907	Chen	Chen	1957	Tui	Ken
1908	K'un	Sun	1958	Chien	Li
1909	K'an	Ken	1959	K'un	K'an
1910	Li	Chien	1960	Sun	K'un
1911	Ken	Tui	1961	Chen	Chen
1912	Tui	Ken	1962	K'un	Sun
1913	Chien	Li	1963	Kan	Ken
1914	K'un	Kan	1964	Li	Chien
1915	Sun	K'un	1965	Ken	Tui
1916	Chen	Chen	1966	Tui	Ken
1917	K'un	Sun	1967	Chien	Li
1918	K'an	Ken	1968	K'un	K'an
1919	Li	Chien	1969	Sun	K'un
1920	Ken	Tui	1970	Chen	Chen
1921	Tui	Ken	1971	K'un	Sun
1922	Chien	Li	1972	Kan	Ken
1923	K'un	Kan	1973	Li	Chien
1924	Sun	K'un	1974	Ken	Tui
1925	Chen	Chen	1975	Tui	Ken
1926	K'un	Sun	1976	Chien	Li
1927	K'an	Ken	1977	K'un	K'an
1928	Li	Chien	1978	Sun	K'un
1929	Ken	Tui	1979	Chen	Chen
1930	Tui	Ken	1980	K'un	Sun
1931	Chien	Li	1981	Kan	Ken
1932	K'un	Kan	1982	Li	Chien
1933	Sun	K'un	1983	Ken	Tui
1934	Chen	Chen	1984	Tui	Ken
1935	K'un	Sun	1985	Chien	Li
1936	K'an	Ken	1986	K'un	K'an
1937	Li	Chien	1987	Sun	K'un
1938	Ken	Tui	1988	Chen	Chen
1939	Tui	Ken	1989	K'un	Sun
1940	Chien	Li	1990	Kan	Ken
1941	K'un	Kan	1991	Li	Chien
1942	Sun	K'un	1992	Ken	Tui
1943	Chen	Chen	1993	Tui	Ken
1944	K'un	Sun	1994	Chien	Li
1945	K'an	Ken	1995	K'un	K'an
1946	Li	Chien	1996	Sun	K'un
1947	Ken	Tui	1997	Chen	Chen
1948	Tui	Ken	1998	K'un	Sun
1949	Chien	Li	1999	Kan	Ken
			2000	Li	Chien

<sup>6</sup> Chart courtesy of American Institute of Feng Shui.

Note: February 5th begins each western year according to the Chinese calendar.

## Sleeping Direction

The East/West School has peaceful sleeping directions for each trigram or personality type. The compass direction that corresponds to your personal trigram is the direction where the *top of your head* should point when you are lying down.

**PERSONAL TRIGRAM  
SLEEPING DIRECTION CHART**  
(top of head this direction when sleeping  
in order of most restful to most active)

KUN	SW, NW, W, NE	SUN	SE, E, S, N
KEN	NE, W, NW, SW	CHEN	E, SE, N, S
CHIEN	NW, SW, NE, W	LI	S, N, SE, E
TUI	W, NE, SW, NW	KAN	N, S, E, SE

Because each bedroom is different, you must also use your common sense. If your favorable sleeping position puts your bed in an awkward area of the room, do not move it. If your spouse is a different trigram, you may have to compromise by one or both of you sleeping in the second or third most favorable position.

*A couple tried everything to get their two year old to sleep well: warm milk, herbal remedies, even physically wearing the child out through playing with him. The child was "kun," so I suggested the parents move his bed so the top of his head was facing southwest, his most peaceful sleeping direction. Now everyone is sleeping soundly.*

### Highest Energy/Most Active Direction

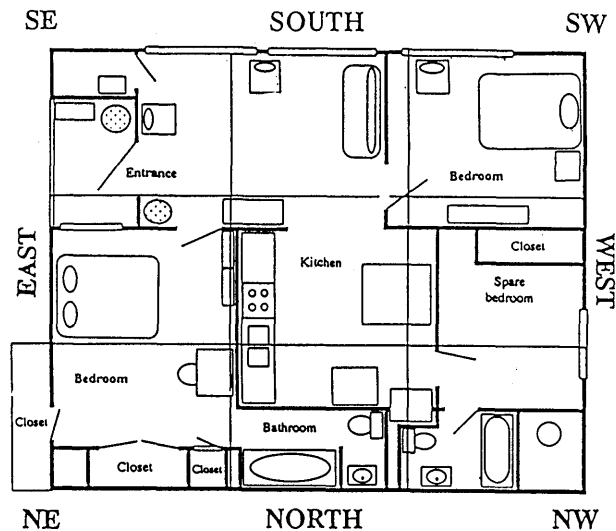
When you know your personal trigram, you can determine your most active or highest energy direction. For example a *li* person would face east. When you face in this direction, meeting a deadline or exercising to your highest capacity is much easier.

**PERSONAL TRIGRAM  
MOST ACTIVE  
DIRECTION CHART**  
(body facing this direction)

KUN	NE	SUN	N
KEN	SW	CHEN	S
CHIEN	W	LI	E
TUI	NW	KAN	SE

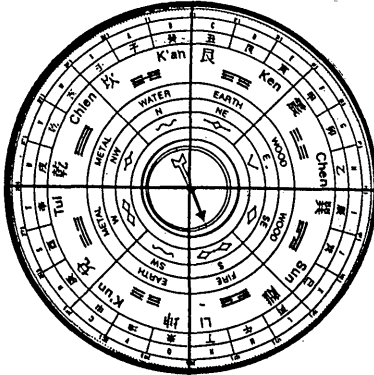
### Building

Environment and personal energy are both important factors in implementing Feng Shui cures; the building itself also holds specific energy that must be analyzed. Look at the magnetic energies of a building to determine its positive or negative energetic qualities. Begin by dividing the building into nine equal quadrants. Eight of the quadrants represent the eight directions around a compass, and the ninth represents the center.



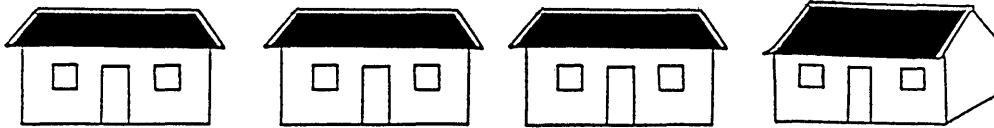


The compass<sup>7</sup> has been used in geomancy for hundreds if not thousands of years.



The use of a loupan, Chinese geomancer's compass, shows the electromagnetic energies of a structure.

This tells you the exact magnetic direction of the building. Within each of the eight compass directions are three sub-directions, for a total of 24 possible directions for a building.



If there is a row of identical houses on the same street, all built in the same year but one angled a mere five degrees differently from the others, not only would it have a different compass reading, it could have a totally different energetic quality or personality. For example, all these houses, except the one on the far right, could be great for making money. Because the home on the right has a different compass reading, which may be as little as a few degrees, the structure will have different potential. Once you know the building's magnetic direction and exact date of construction, there is a wealth of information that you can learn about it.

---

<sup>7</sup> The ancient Greek geomancers used a compass; the Indians use the compass directions when practicing Vastu Shastra, the Vedas sacred geomantic architectural system; and of course, the Chinese use it.

### **The Personality Type or Potential of the Building**

Does your house have the potential for arguments and lawsuits, for making lots of money or. . . .?

*A colleague called to say, "Feng Shui is so incredible." By doing a compass reading on a house, she was able to calculate, by using the magnetic direction and exact construction date, that it had a potential for divorce and separation. The couple seemed quite happy. Not wanting to put any negative ideas into their heads, my friend simply asked if there was anything in particular they wanted to discuss before the reading. She almost fell off the chair when her clients told her that their new neighbors had commented that the last three couples who had lived in the house had gotten a divorce.*

Based on the magnetic direction and date of construction, the energy of your house or business can be inherently positive or negative, which does not mean if the energy is *negative* that you should move. It simply means you need to be aware and to implement corresponding Feng Shui cures to improve the energy of the space. The key lies in what you do with the information. This example shows how a *negative* space can be *made* positive or improved.

*One client owned a furniture store that had negative energy based on the magnetic reading and date of construction. At first glance, it would seem that the store would have major problems getting clients and making money, yet it was making a handsome profit. What mitigated this negative building personality were the additional factors that offset or softened it.*

*The most important factor for a building is the door people use. The door brings in Chi (energy) and profit for a business. This business had its door on the corner of two streets with high pedestrian traffic, in a wealthy neighborhood, with convenient parking. The cash register had also been placed in a very auspicious area of the building.*

*To further enhance their business, I stationed the salespersons' desks in the most beneficial part of the building, in accordance with each of their personal trigrams, so they could prosper to their full potential.*

This store is a great example of how you must look at the whole picture and not just one individual detail.<sup>8</sup> It would have been misleading to abandon the reading after determining that the building had a negative energy personality.

## **Time**

Two elements must be factored in when considering time: twenty-year cycles and one-year cycles. Life is about cycles.<sup>9</sup> These cycles represent predictable trends that can impact people in a variety of ways. You can tap into the positive energies of a cycle and remedy and/or avoid the negative ones.

## **Twenty-Year Cycle**

The twenty-year cycle is based on a Saturn/Jupiter alignment or conjunction with the corresponding magnetic-energetic shift.<sup>10</sup> The twenty-year cycle has a profound effect on you and your surroundings. It is an important consideration in a Feng Shui reading. An earthquake in Southern California gives us an interesting example of how the twenty-year cycle plays out.

---

<sup>8</sup> A good metaphor for life.

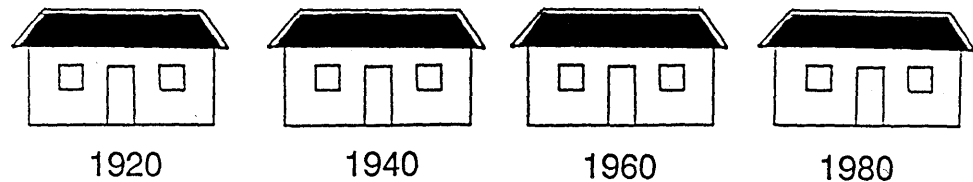
<sup>9</sup> *In accordance with natural laws, everything is cyclical.*

<sup>10</sup> History has proven how important these twenty-year cycles are. An article in the July, 1995, issue of The Mountain Astrologer revealed that every United States president who assumed office under this conjunction in the earth family died in office: Harrison, Lincoln, Garfield, McKinley, Harding, Roosevelt, and Kennedy.

## 120 Contemporary Earth Design: A Feng Shui Anthology

---

Each house is identical, on exactly the same street facing exactly the same direction.



The only difference in the houses is that they are built in different twenty-year cycles. The house built in 1920 could have a potential for divorce and separation, the house built in 1940 could have a potential for illness, the house built in 1960 could have a potential for creativity, and the house built in 1980 could have a potential for making a lot of money.

*A client had a home built in 1942, long before many earthquake building standards were in effect. It was condemned after a recent earthquake, and a new one was built on the exact same site, facing the exact same direction.*

*The reading I did showed that the old house had a potential for illness, which the client confirmed. The new house, built during a different twenty-year cycle, showed a potential for making money. Six months after moving into the new house, in the same spot and the same direction, the owner got a promotion and a substantial raise.*

## Annual Cycle

Once a house is built, it has a certain energy and a certain personality. Annually, there is a distinct energy, whether positive or negative, that comes in and affects every part of the house.

*A colleague did a reading on a condominium. This place was like Fort Knox; he had to go through two security gates to enter. There was no way an intruder could have broken in. Yet, when he did a reading, he was able to pinpoint that a robbery had taken place in the bedroom in 1993. The shocked owner confirmed that during a party someone had stolen all her jewelry from the exact spot my colleague had pointed out to her.*



The most dramatic example of this annual energy cycle and its effects is a very personal story.

*My mom slept in a room that had terribly unbalanced energy. In 1974, the annual energies came in and intensified this negative energy; that is the same year she got cancer and had a mastectomy. Just think, if I had had Feng Shui knowledge then, I might have prevented or at least used a remedy to soften the effect of her illness.*

**Role of Feng Shui**

Feng Shui is a tool to help you on your path. It is not a cure-all, but it is a powerful ally to help you make positive choices about how you live. The Chinese believe that destiny, luck, charity, effort, and work/study comprise the majority of who you are and that Feng Shui can help you mold these elements into life-transforming gifts. You are born with varying degrees of potential in each aspect of your life, but what you make of these gifts is based on the choices you make along the way.

Master Larry Sang, my master teacher, whom I thank for bringing much needed information on Feng Shui to the general public, has this for you to consider:

**Yesterday's mysteries are today's sciences  
and today's mysteries are tomorrow's sciences.**



Excerpted from  
*The Feng Shui Anthology*

Jami Lin's  
Feng-Shui-Interior Design

Visit [JamiLin.com](http://JamiLin.com)

Internationally renowned Feng Shui Master and  
best-selling author shares the most effective teachings from all traditions!

The most effective & powerful, do-it-yourself Feng Shui advise in the world.

1• 800 • EarthDesign

In *The Feng Shui Anthology*, when the **Bagua** is discussed, **only the Life-Aspiration Energies are mentioned** (except in Derek Walter's article.). **To work with the Bagua and to maximize your Feng Shui with the information of all the masters, you must include your 8) Best Directions and 9) Flying Star Energies.**

Your [Personal Success Bagua-Map](#)  
will optimize Feng Shui & Design Success

If you are a Feng Shui beginner or an expert...

Your Personalized Success Map  
contains ALL essential, at-a-glance solutions  
that Jami Lin provides during a private consultation.

**IMPORTANT: Popular Feng Shui misconceptions!**

- REAL Feng Shui is not a "one size fits all"
- There is not one Feng Shui map generic to everyone's home.
- If you moved in your home between 1984 and 2048,  
there are 2048 Bagua maps.
- **ONLY ONE BAGUA-MAP is correct for YOU**  
and Your Home: and it is called YOUR [Personal Success Map!](#)

Check out YOUR Custom [Personal Success Map](#)  
and [Listen About it!](#)

**Because YOU are now on your Feng Shui journey,  
I made it really easy for you to personally benefit with my experience.**

- Schedule your private, **“by-the-Minute Consultation:”**  
the BEST way learn and be 100% sure You are on the right track!
- Learn from **Home Study Mastery Program**  
(With its **☆☆☆☆ “Hidden Treasure” review!**)
- Join our monthly **LIVE Q&A chat**, included FREE with  
**Mastery Membership** and take advantage of all the mastery offerings!
- Read Jami Lin’s **Internationally-Acclaimed books.**