

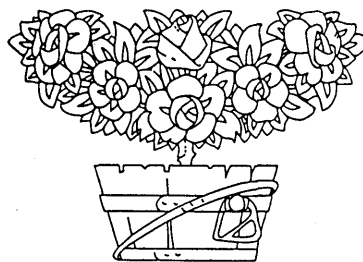
The Entry: New Beginnings

Kathy Mann

Feng Shui explains how energy or Chi flows into your life, through your environment, and how it can be altered to produce positive changes. A significant transition space for influencing the flow of Chi is where the external meets the internal, the entryway. The entry of a home or business is like a foreword to a book; it sets the tone for what is to come. Feng Shui gives you the tools to capture positive flowing Chi and deflect any negative Chi in a loving, compassionate way.

Feng Shui works on the eight areas of your life: career, knowledge, family, wealth, reputation, partnership, children, and helpful people, as they are seen and felt through your environment. The energy you need for making changes in these areas of your life can be found right on your doorstep. Making your entryway inviting will let positive Chi flow into your home and life.

**Feng Shui can teach you to interpret Chi, harness it,
and let it flow vibrantly into your life.**



The Environment

When working with Feng Shui and Chi flow for your entrance, you must consider the larger environment where your home or business is located. If the Chi is not flowing in the surrounding space, it will not find its way to your door.

If your neighborhood has trees, parks, and abundant, beautiful scenery, it will bring a peaceful, clear, and clean energy to your home.

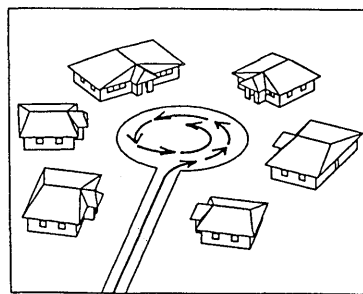
202 Contemporary Earth Design: A Feng Shui Anthology

If your neighborhood is near a power plant, high tension wires, or a city dump, the energy that flows toward the home will be negative and harmful. Using a transcendental cure with mirrors is one suggestion for altering this negative influence. Place them with loving intent¹ to deflect and push that energy away from your home.²

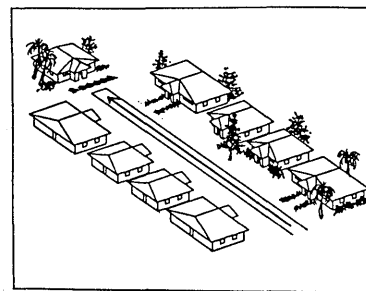
Traffic and roads also play a crucial role in the movement of Chi toward a home or space. One-way streets channel Chi in a fast and direct manner that can blast a house. Plants, a water fountain, stones, or a statue placed with intent in the path of oncoming, rushing Chi can slow it down and transform it into positive energy. A business may use this fast-moving Chi to increase customers and profits by placing such items as flags, balloons, neon lights, wind chimes, windsocks, or banners to slowly invite it in.

A client with a business on a highway placed a windsock on the front door to attract fast moving Chi. She quickly saw an increase in business, more new customers started coming, and her regular customers began purchasing in higher volumes.

Typical suburban streets with two-way traffic flow are ideal, particularly if they meander slightly. Trees on a straight street give it a meandering feel since the Chi interacts smoothly with the strong life force of the trees. T-intersections, dead-end streets, and cul-de-sacs have a one way pattern of Chi flow.³



Cul-De-Sac



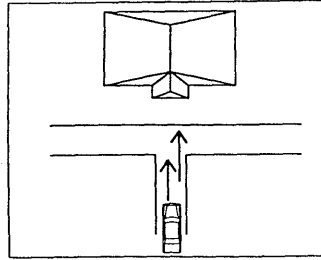
Dead-End Street

¹ Please refer to "Setting the Intent" in *Earth Design: The Added Dimension*.

² Inside the home you may place a large crystal or a round cut glass; a 60 mm crystal is recommended.

³ Graphics: *Earth Design: The Added Dimension*.

T-Intersection

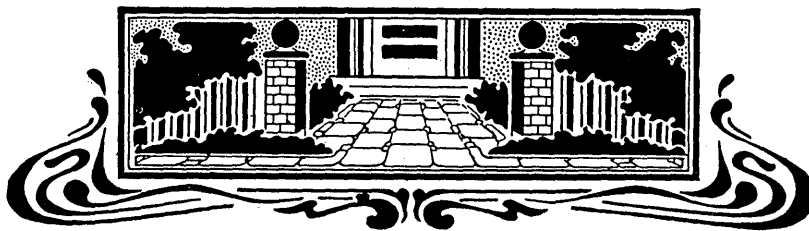


This can cause a stagnant flow of energy and lead to a one-way mentality for the people who live there. Plants, trees, bushes, and flowers can be used to get Chi moving. Water fountains, whirligigs, windmills, flags, and wind chimes may also be strategically placed to keep the flow of Chi healthy.

The Entryway

Every entrance has its own individual *feel*. A message about who lives in a home or works in a business is conveyed by what is at the entrance. The first impression is vital.

I arrived at a client's business to find two industrial-sized garbage dumpsters, one on each corner of the front of the lot. What do two garbage monuments say about this business? We moved the owner's dumpster out of view to the side of the building, and the neighboring business did the same. On the next visit, the lot had a new look and a welcoming energy.



**Whatever is placed around the front door
is symbolic of the occupants.**

204 Contemporary Earth Design: A Feng Shui Anthology

Be mindful of what is placed in this key location. The first step to achieve a positive transition space is to step back and observe your entrance. Does the landscaping and architecture flow together? How is the yard maintained? Is there clutter?

Enter your driveway or walkway and study it as if you were a stranger. Pay attention to the details. Are there any cracks in the sidewalk? Is the pathway wide or narrow? Is it straight, angled, curved? How does it feel to you?

Ideal pathways meander and curve slightly to keep Chi moving in a healthy pattern. Avoid sharp lines and ninety-degree turns whenever possible. Flowering and leafy plants that border the pathway will help to create the feeling of curves. Color influences energy, so when choosing flowering plants, consider red for Chi activation or yellow for strength and wisdom.

The pathway is a symbol of career and opportunity. How it is shaped and maintained is an indicator of your career.

A client was juggling three separate businesses. She had been trying for some time to sell one of them, as she no longer had time to run it successfully. Her career was mirrored in her entry; she had three clear pathways to the front door from the road she lived on. Closing one off stopped the energy flow to one of her career paths, and the business sold quickly.

Lush and well-maintained landscaping is essential to good Feng Shui; it brings prosperity, harmony and health. Dry spots should be taken care of as soon as possible as they indicate dulled Chi and dried up opportunities. Keep trees and shrubs trimmed back and free of any dead leaves or branches. Remember to pull the weeds which choke your plants and your opportunities.

Overgrowth around the entrance also makes it difficult for Chi to flow and for new opportunities and wealth to enter. It gives the same feeling as cluttered closets and drawers inside the home or business. Avoid planting too close to the building or in the path of Chi.

Any environment fed by a beautiful entrance will have good fortune and abundant opportunities.

A woman was seeking help with her career. Her home was lovely, and the landscaping was lush and beautiful. There were two potted plants on each side of the walkway, but they were so large they spilled over on the path and crowded the front door. I recommended she put these beautiful plants in a more spacious location since they were hindering her career movement. Soon after moving them, she was offered a chance to go into private practice after years of government service. She had done the career changing groundwork, and all she needed was to open up a space for the opportunity to come in.

The Front Door

The front door requires a careful range of Feng Shui analysis. Even if it is not used as the primary entrance, it still represents the main pathway of Chi and your career. The area around the door should be free of clutter. Check for any type of Chi restriction that blocks the front door. Unpruned trees and those planted too close to the house can block the view of the front door, and a clear view is a good indication of a solid career path.



Suggestions for beautification and Chi enhancement around the door are silk flags, wind chimes, brass bells, lions or foo dogs, flower boxes, welcome mats, hanging plants, or Bagua mirrors.⁴

A red flowering plant in a terra-cotta planter placed outside the front door will enhance a solid and stimulating career path. In the Bagua,⁵ the element that corresponds to career is water, so a carefully placed water

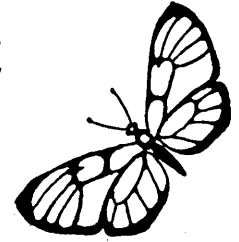
⁴ It is best to consider the whole environment and elemental balance before suggesting any one enhancement. There may be influences from neighboring homes or businesses, which need to be considered when making the appropriate selection.

⁵ Please refer to "The Bagua," p. 35.

206 Contemporary Earth Design: A Feng Shui Anthology

object near your front door can bring career success and prosperity. A man-made pond with fish, an electrically powered fountain, a bird bath, or water rock garden are also ideas to bring water and good fortune to your front door.

There is a very elegant hotel that is surrounded by a gently flowing, man-made river. It is abundant with ducks, geese, and vibrantly colored fish. The landscaping is full of palm trees, bushes, flowers, and nesting birds. Arriving at such a setting, you feel an immediate sense of peace. Who would ever want to leave? Not surprisingly, it is one of the most prosperous hotels in the area.



Avoid square columns as an architectural feature near your front door. If you already have them, soften them with ivy, or use plants and crystals to deflect the negative influence of the secret arrow⁶ Chi they project from their sharp angles.

Looking from your walkway, the area to the left of the front door is the knowledge area of the Bagua. Knowledge means more than intellectual book knowledge, it can mean cultivation of *inner knowing* received from your higher source. This life area is activated with the color blue. Blue accents can be added with flowers, a blue mailbox, a bird feeder, or blue letters for the address.

To the right of your door is the benefactors or helpful people area. The colors to enhance it are gray, black, and white. You might consider using a collection of stone statues, like personified garden frogs or your rose collection to bring helpful people into your life from many sources.

What is on the outside of your environment reflects what is on the inside, in your heart.

Creating the passageway between you and the world is an intensely personal process. It should reflect your journey and the image you want to project. Balancing Chi energy at your entryway brings harmony, prosperity, health, abundance, and good fortune for all those who enter your home.

⁶

Please refer to "Contemporary Architectural Design," p. 143

Excerpted from
The Feng Shui Anthology

Jami Lin's
Feng-Shui-Interior Design

Visit JamiLin.com

Internationally renowned Feng Shui Master and
best-selling author shares
the most effective teachings from all traditions!

The most effective & powerful, do-it-yourself Feng Shui advise in the world.

1• 800 • EarthDesign

MEGA-SPECIAL
only \$70



Call NOW:
1-800-EarthDesign
site@JamiLin.com

Jami Lin's Feng Shui Collection

- **Feng Shui Today-book** (Book-of the-Month Club)
- **Feng Shui Today-DVD** (Book-of the-Month Club)
- **The Essence of Feng Shui**
(FS, Chakras & Aromatherapy)
- **3) Personalized Consultation Series Books:**
Basic Energy, Earth Energy & Heaven Energy
- **BONUS:**
Extra set of Basic & Earth Energy Cards
- **BONUS:** Jami Lin's PBS Television pilot

a \$102 Value: Limited Time Only!

[More on these
best-selling, jam-packed Feng Shui resources!](#)

**Because YOU are now on your Feng Shui journey,
I made it really easy for you to personally benefit with my experience.**

- **Schedule your private, “by-the-Minute Consultation:”
the BEST way learn and be 100% sure You are on the right track!**
- **Learn from Home Study Mastery Program
(With its ★★★★★ “Hidden Treasure” review!)**
- **Receive Essential Feng Shui Advise Customized to You and
Your Home with Personal Success Map!**
- **Join our monthly LIVE Q&A chat, included FREE with
Mastery Membership and take advantage of all the mastery offerings!**